



# 2012-2013 GMT Reports for District (or Undistricted) **District 13 A**

GMT: **JERRY SMITH**

Location: **OHIO**

GMT CA: **1**

## CLUBS

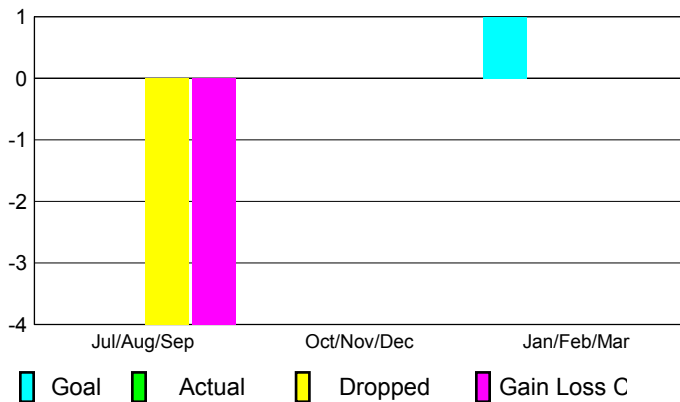
Club Results  
2012-2013

Clubs  
2011-2012

| Month         | New Club Goal | Actual New Clubs | Actual Dropped Clubs | Gain/Loss of Clubs | Gain/Loss of Clubs |
|---------------|---------------|------------------|----------------------|--------------------|--------------------|
| Jul/Aug/Sep   | 0             | 0                | -4                   | -4                 | 0                  |
| Oct/Nov/Dec   | 0             | 0                | 0                    | 0                  | 0                  |
| Jan/Feb/Mar   | 1             |                  |                      |                    | 0                  |
| <b>Totals</b> | <b>1</b>      | <b>0</b>         | <b>-4</b>            | <b>-4</b>          | <b>0</b>           |

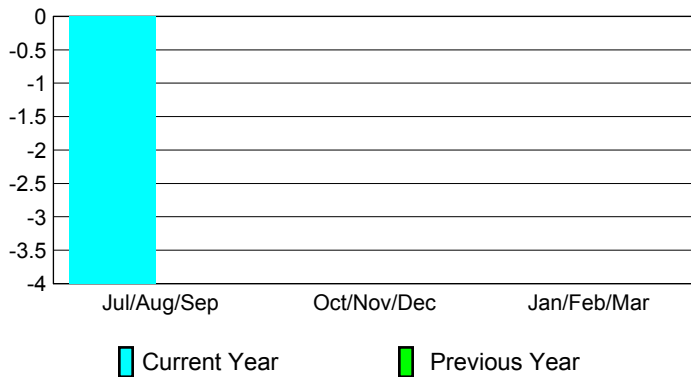
### Club Results 2012-2013

Goal, New, Dropped, Gain/Loss



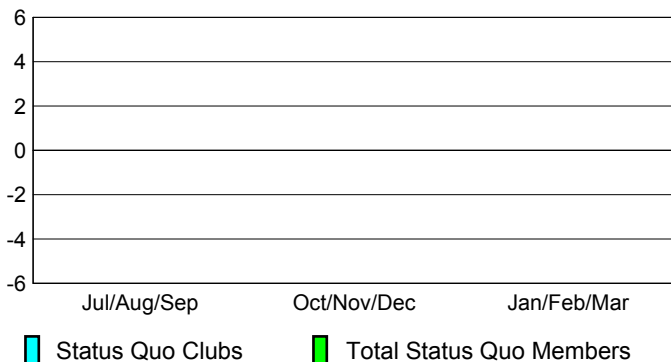
### Comparison of Club Gain/Loss

Current Year Compared to the Previous Year



### YTD Status Quo Clubs 2012-2013

Status Quo Clubs Compared to Status Quo Members



## MEMBERSHIP

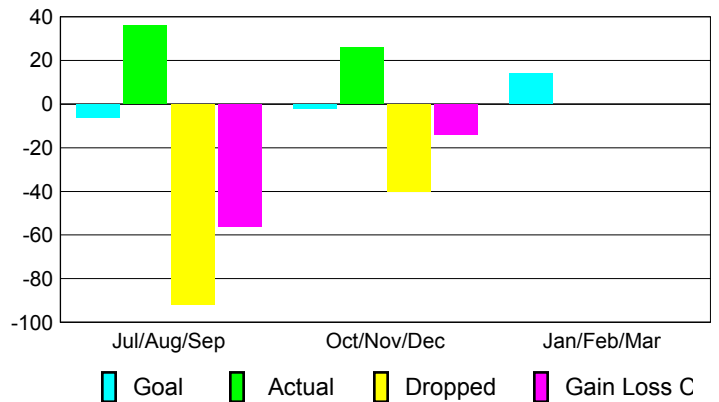
Membership Results  
2012-2013

Membership  
2011-2012

| Month         | Net Memb Goal | Actual New Memb | Actual Dropped Memb | Gain/Loss of Memb | Gain/Loss of Memb |
|---------------|---------------|-----------------|---------------------|-------------------|-------------------|
| Jul/Aug/Sep   | -6            | 36              | -92                 | -56               | -4                |
| Oct/Nov/Dec   | -2            | 26              | -40                 | -14               | 20                |
| Jan/Feb/Mar   | 14            |                 |                     |                   | -24               |
| <b>Totals</b> | <b>6</b>      | <b>62</b>       | <b>-132</b>         | <b>-70</b>        | <b>-8</b>         |

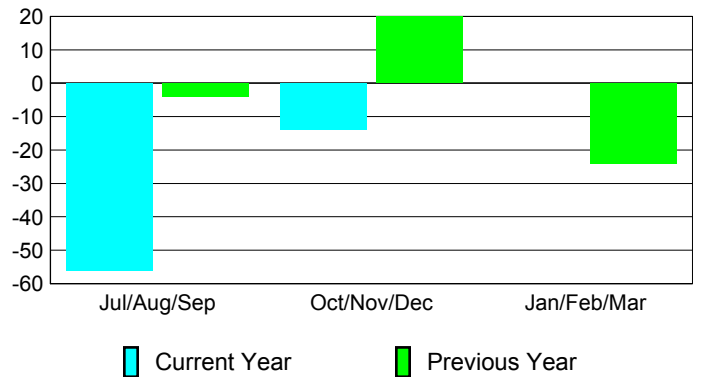
### Membership Results 2012-2013

Goal, New, Dropped, Gain/Loss

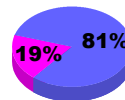


### Comparison of Membership Gain/Loss

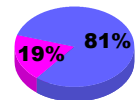
Current Year Compared to the Previous Year



### Gender Comparison 2012-2013



Jul/Aug/Sep



Oct/Nov/Dec

Jan/Feb/Mar

Male

Female